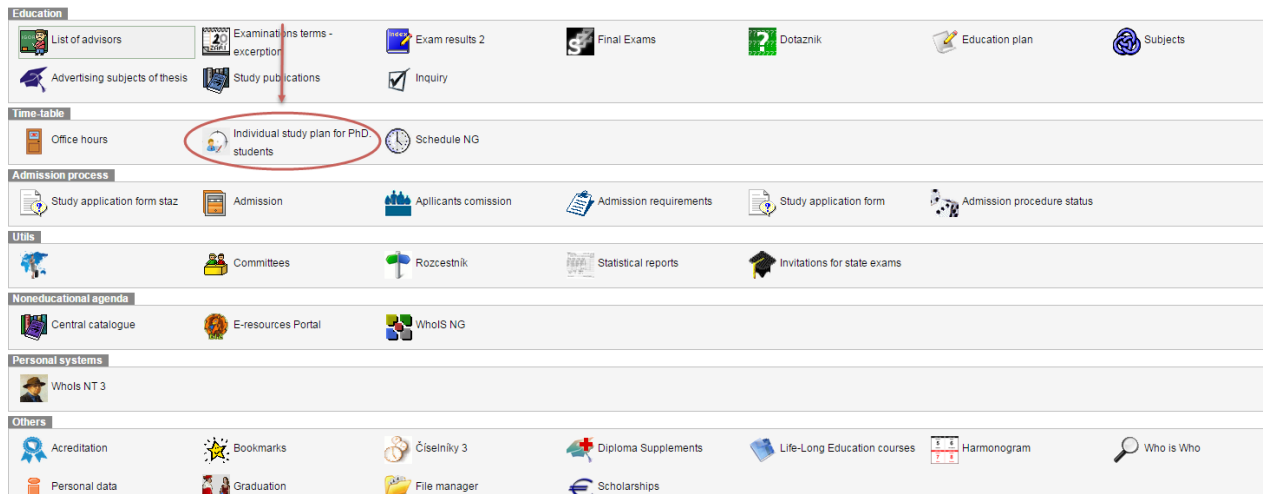
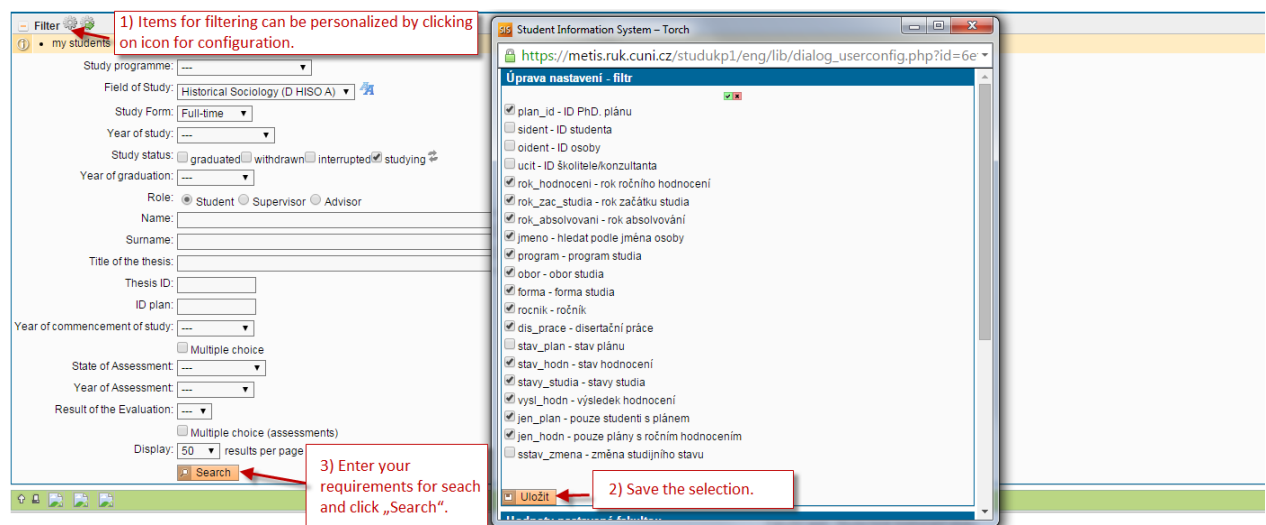


## Operations related to the annual assessment of a doctoral student (PhD) in IS Study (supervisor)

- 1) Once logged in to the Student Information System ([www.is.cuni.cz/studium](http://www.is.cuni.cz/studium)), click the icon “Individual study plan for PhD students”.



- 2) By entering appropriate data to the filter, find the specific student, students of the selected branch etc. (the offer of items for filtering can be personalized).



- 3) The list of students displays the basic information on each student and the relevant annual assessment. For the details on the annual assessment of a specific student, click the icon “Annual Assessment Details”.



- 4) In the detailed view, you can see the current status of completion of duties, as well as the student's comments on the annual assessment proposal. The supervisor is also informed on changes of the approved individual study plan, as suggested by the student (proposals to add or remove duties). The supervisor may comment on the proposal of changes; the approval of the request is the responsibility of the Subject Area Board.  
(If the faculty configuration allows it, the supervisor can also edit the information on the completion of the student's duties).

**Status of annual assessment in academic year 2015/2016**  
Academic Year: 2015/2016  
State: Proposal  
Responsibility: Supervisor  
Preceding responsibility: Student  
Change: 16.05.2016  
Annual Assessment Proposal in PDF form: [...](#)

Previous annual assessments of fulfilling the ISP

History of reasons for returning the assessment of ISP

Dissertation and progress on the dissertation

Type	Title, details	Year of insertion
doctoral dissertation	The Process of Revolutionary Change in the Middle East: From Transformation to Collapse of the whole state structure. A Comparative Study on armed forces	2015/2016
progress on the doctoral dissertation		2015/2016

Information about course of study according to examinations („coupled duty”).

Student's comment to current status of completion of duty.

Type	Assessed	Who	When	Text of assessment
progress on the doctoral dissertation	Student		16.05.2016	test

Course of study

List of duties

Type	Code	Title, details	Ac. year	Semester	Fulfillment according to student	Fulfillment according to SIS	commentary on annual assessment	Year of insertion
Course	YDHA004	Doctoral Seminar II	2016/2017	Winter	Passed	Not passed	comment	2015/2016
Course	YDH002	Methods and Techniques of Historical Sociology	2016/2017	Winter	Passed	Not passed	Request Test	2015/2016
Course	YDH006	Politics, Power and International Relations in the Perspective of History and	2018/2019	Summer	Not passed	Not passed		2015/2016
Course	YDHA001	Theoretical Conceptions of Historical Sociology	2015/2016	Winter	Not passed	Not passed		2015/2016
Conference		Conference Berlin	2017/2018	Winter	Not passed	Not passed		2015/2016

Information about student's request to remove duty from individual study plan.

Other commentaries

Conclusion of assessment

Type	Assessed	Who	When	Text of assessment
Annual Assessment	Student		16.05.2016	test

Instructor action:

- 5) The supervisor adds his/her comments on the assessment proposal, and then submits the annual assessment to the Subject Area Board. (If appropriate, the supervisor may return the annual assessment to the student for completion.)

**Conclusion of assessment**

Type	Assessed	Who	When	Text of assessment
---				

insert conclusion of assessment

send the assessment back to the student for correction or amendment

submit assessment proposal to Subject Area Board

1) Insert conclusion of assessment\*.  
2) Once the assessment is submitted to a Subject Area Board, it cannot be edited by supervisor.

**Annual assessment of fulfilling the ISP in academic year 2015/2016**

+ Student: **John Nowak** ( ID: "464447" ) ⚠

+ SAB Chair: **doc. PhDr. Jiří Šubrt, C.Sc.**

+ Supervisor (16.09.2015 - 30.10.2015): **doc. PhDr. Jiří Šubrt, C.Sc.**

+ Supervisor (30.10.2015 - stays): **Mgr. Karel Černý, Ph.D.**

+ Advisor (16.09.2015 - stays):

+ State of the Plan ( ID: "11558" )

- Status of annual assessment in academic year 2015/2016

Academic Year: 2015/2016  
 State: Proposal  
 Responsibility: Supervisor  
 Preceding responsibility: Student  
 Change: 16.05.2016

Annual Assessment Proposal in PDF form:

---

**Insert Annual Assessment**

Study status Study status since Study status until  
 studuje 16.09.2015 30.09.2016

Text of assessment: \* comment.....

Max length 2500 characters, typed 0, 2500 remaining.

Assessment: A  
B  
C

- 6) Once the annual assessment is submitted to the Subject Area Board, neither the supervisor nor the student can further edit it. (Before the approval, the Subject Area Board may return the annual assessment to the student or supervisor for changes or completion; then the responsibility shifts, and the relevant items can be edited again.)

• assessment submitted to Subject Area Board

**Annual assessment of fulfilling the ISP in academic year 2015/2016**

+ Student: **John Nowak** ( ID: "464447" ) ⚠

+ SAB Chair: **doc. PhDr. Jiří Šubrt, C.Sc.**

+ Supervisor(16.09.2015 - 30.10.2015): **doc. PhDr. Jiří Šubrt, C.Sc.**

+ Supervisor(30.10.2015 - stays): **Mgr. Karel Černý, Ph.D.**

+ Advisor (16.09.2015 - stays):

+ State of the Plan ( ID: "11558" )

- Status of annual assessment in academic year 2015/2016

Academic Year: 2015/2016  
 State: Proposal  
 Responsibility: Subject Area Board ←

Preceding responsibility: Supervisor  
 Change: Mgr. Karel Černý, Ph.D. 16.05.2016

Annual Assessment Proposal in PDF form:

+ Previous annual assessments of fulfilling the ISP